

NEWSLETTER

MARCH '22



City of Sanctuary is a national organisation of support groups throughout the UK making their cities, towns, schools and organisations places of welcome and hospitality for people seeking safety from persecution and war. If you would like to volunteer with BCofS please email secretary.bbcos@gmail.com

The Refugee Council - We are still here to help!

The Refugee Council is a national independent charity that works across the country to support refugees and asylum seekers. The National Refugee Council leads the Barnsley Refugee Council. The Barnsley Refugee Council has funding to work in Barnsley, offering support to Asylum Seekers and Refugees living in the town, for the next five years.

The aim of the Barnsley Project are...

Making Barnsley more Refugee friendly.

Delivering a direct one to one advice service to refugees and asylum seekers living in Barnsley.

Training for organisations that provide front-line service to refugees and asylum seekers living in Barnsley

Community development; enabling organisations to deliver services that meet the needs of refugees and asylum seekers living in Barnsley.

The Barnsley Refugee Council office is located at:

23 Queens Road, S71 1AN
01226 320111

The office is open

Mon / Tue / Wed / Thur - 10.00am - 2.00pm

Christina Grant

Project Manager & Community Development Worker
Email: Christina.Grant@RefugeeCouncil.org.uk
Mobile: 07917 135843

Jackie Wray

Asylum Advisor
Email: jackie.wray@RefugeeCouncil.org.uk

Khaled Alayoubi

Integration Officer
Email: khaled.alayoubi@RefugeeCouncil.org.uk
Office Number: 01226 320111

Who is Who?

Refugee

A refugee is a person, who owing to fear of persecution for reasons of race, religion, nationality, membership of a particular social group or political opinion, is seeking a place of safety outside their country of origin. In the UK a person is officially recognised as a refugee when they have their claim for asylum accepted by the Government.

Asylum Seeker

An asylum seeker is a person who has left their country of origin and formally applied for asylum in another country but whose application has not yet been concluded. A refused asylum seeker is a person whose application has been unsuccessful and who has no other claim for protection awaiting a decision.

Economic Migrant

An economic migrant is someone who has moved to another country to work.
Refugees are not economic migrants.



Translated Vaccine Guidance

British Red Cross have launched new translated COVID-19 vaccine guidance to ensure everyone can access this crucial information in their own language.

For COVID-19 information in different languages please go to the following website:
www.doctorsoftheworld.org.uk/coronavirus-vaccine-information

Refugee, Migrant & Asylum Seeker Women's Group

Come along to our women's group
to meet new people and take part in activities

Every Wednesday 10.00am - 12.00pm

Hope House Café
2 Blucher Street, Barnsley S70 1AP

This service is available to
all Refugee & Asylum seeking women in Barnsley
Children are welcome

Spaces are limited, so please book by contacting
Chrissie Grant - 07917 135843
or email: christina.grant@refugeecouncil.org.uk

Refugee, Migrant & Asylum Seeker Men's Group

If you are looking to **meet new people**,
join in activities and information sessions,
then come along to our men's group.
It's a **safe space** to share experiences
and connect with others

Every Tuesday 12.00pm - 2.00pm

Refugee Council
BCVS Building, 23 Queens Road, Barnsley S71 1AN

Spaces are limited, so please book by contacting
Chrissie Grant - 07917 135843
or email: christina.grant@refugeecouncil.org.uk



SUPPORTING AND
EMPOWERING
REFUGEES

How to

Contact us



South Yorkshire

POLICE



in an emergency

call **999**



or call **101**

if it's not
urgent

Report incidents

online

Log in and

live chat



Whether you click or call

**We are here
to listen**



Hate Crime

Hate crime not only harms its victims, it also harms their families and communities. We want to raise awareness of what a hate crime is and help people understand that it is not right to target people based on their identity.

Anyone can be a victim of a hate crime. It is a criminal offence which is perceived by the victim, or anybody else, to be motivated by hostility or prejudice towards someone's:

Race, Religion, Sexual Orientation, Transgender Identity, or Disability

A hate crime can include bullying, verbal abuse, intimidation, threats, harassment, assault and damage to property. South Yorkshire Police (SYP) are committed to tackling all forms of hate crime and non-crime hate incidents and if you, or someone you know, has been a victim please report it by calling 101, or 999 in an emergency. You can also make reports online via the SYP website, or by contacting a third-party reporting centre. These centres can help you complete your report and offer support and guidance. (A list is attached.)

Through partnership working, with the support of our communities and local LGBT+ community groups SYP aim to strengthen our relationships, educate and highlight the support available.

“Please remember, Hate Hurts! Report it and put a stop to it.”

Directory of Community Reporting Centres in Barnsley

Barnsley Metropolitan Borough Council (BMBC) offices

You can report hate crime at any BMBC office

☎ 01226 775656

✉ Email: safer@barnsley.gov.uk (start with the word HATE in the subject box)

💻 www.barnsley.gov.uk/hate

Text: 61009 (start with word HATE) – standard text message rate

Library@The Lightbox

1 Glass Works, Barnsley S70 1GW

Reports made at the customer service desk

✉ Email: barnsleylibraryenquiries@barnsley.gov.uk

💻 <https://www.barnsley.gov.uk/services/libraries>

OR any local library in your area (see BMBC website for locations)

Adult Learning Services

Floor 2, Wellington House, Market St, Barnsley, S70 1WA

☎ 01226 775270/775271

✉ adultlearning@barnsley.gov.uk

💻 www.barnsley.gov.uk/services/adult-skills-and-community-learning/

Berneslai Homes

Providers of local authority housing

☎ 01226 775555

✉ Email: customerservices@berneslaihomes.co.uk

💻 www.berneslaihomes.co.uk

Victim Support

Victim Support responds to the individual needs of victims and witnesses living in Barnsley via telephone support, home visits or office visits. Volunteers are trained in hate crime.

☎ Barnsley Victim Support local office: 01226 243761

💻 www.victimsupport.org.uk

Citizens Advice Barnsley

Citizen's Advice provide guidance and advice to members of the public about debt, employment, housing, benefits, tax credits and immigration issues

☎ 03444 111444 Mon-Fri 10am to 4pm (Text relay for deaf/hard of hearing 03444 111445)

💻 <https://barnsleycab.org.uk> (email is a link on contact page)

Refugee Council

Support and advice for those seeking asylum and refugees

23 Queens Rd, Barnsley S71 1AN

☎ 01226 320111

Education Learning Support Hub (ELSH)

Providing learning to help adults not in education, employment or training, asylum seekers, refugees and migrants.

5 Warren Quarry Lane, Barnsley S70 4NF

☎ 01226 643249

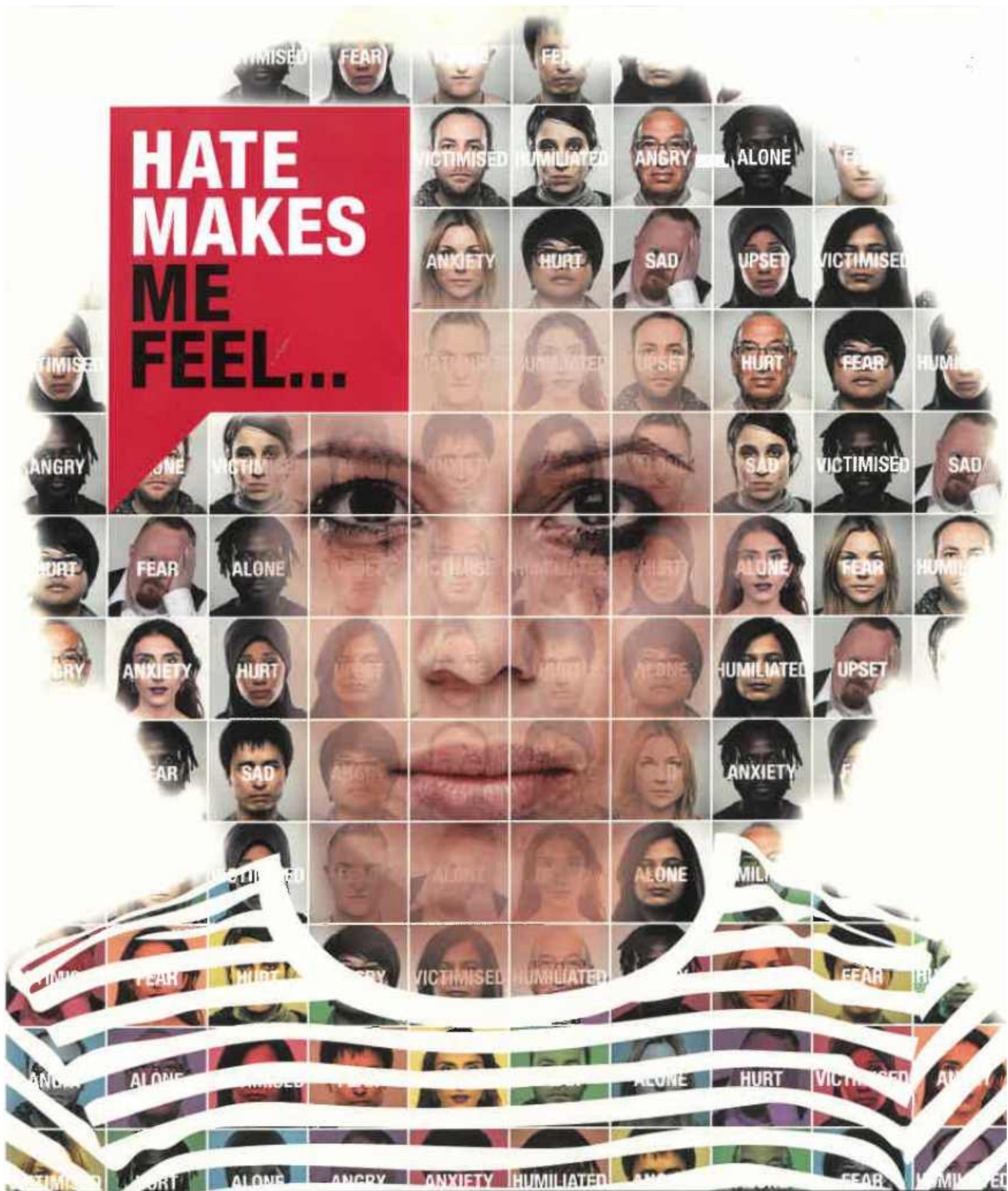
💻 www.elshub.org.uk

True Vision - www.report-it.org.uk

Stop Hate UK - www.stophate.uk

Tell Mama (Measuring Muslim Attacks) - www.tellmamauk.org

HATE MAKES ME FEEL...



Hate hurts. Report it and put a stop to it.

No-one should have to live with fear, anxiety or consequences of being 'different'.

- Call 101 or 999 in an emergency
- Visit [southyorks.police.uk/hatehurts](https://www.southyorks.police.uk/hatehurts)
- Deaf or speech impaired telephone 18001 101 or SMS 0778 6220 022

    #HateHurtsSY



South Yorkshire

POLICE



When to call 999

When there is a threat to life; this includes road traffic accidents where people are injured, the road is blocked or a vehicle involved in the accident has failed to stop. Violence to a person or damage to property is imminent. A serious offence is actually in progress. A suspected offender is still at the scene of a crime. When any delay in reporting the incident may prevent the apprehension of an offender. When serious disruption to the public is currently taking place or, is likely to take place.

When to call 101 (non emergency)

To report a crime that is not currently taking place and the offender is no longer present.

Where your call is routine enquiry.

To make an appointment to attend an enquiry desk.

Requests for advice or to provide information.

Lost and found property enquiries.

Before calling, please visit our 'Should I Call 101 page' to check whether it is something we can help you with.

Report an incident online

As an alternative to 101, you can report your non-emergency incident on our [online portal](https://smartcontact.southyorkshire.police.uk/). Also on the portal, you will be able to track the status of your report, read a number of knowledge items relating to your incident, and live chat with members of the force.

<https://smartcontact.southyorkshire.police.uk/>

Other online services

The following services are not available on the online portal at present.

Submit a Freedom of Information request

Compliment SYP

Complain about SYP

Complete a NHS referral

Report a breach of Covid-19 regulations

Report domestic abuse

Report fraud

[The safe Places Scheme](http://www.safeplaces.org.uk/)

<http://www.safeplaces.org.uk/>

[Barnsley Council](http://www.barnsley.gov.uk)

<http://www.barnsley.gov.uk>

Tell us...

Some incidents may seem trivial, and too much trouble to bother reporting, but it's very important that you do. We target our resources according to analysis of crime reports, so if large numbers of incidents are not reported this analysis will be incorrect.

Not all reports of crime result in a visit by a police officer, but when looked at along with other reports from the same area a picture may emerge which enables the police to respond more effectively than to individual incidents.

[Did you know that you can report anonymously?](#)

If you want to report a crime or suspicious activity, you can contact Crimestoppers with the information anonymously.

You can do this by calling them on 0800 555 111 or by completing their online form.

CrimeStoppers.
Speak up. Stay safe.

Finding a Doctor

Before you register, contact the GP surgery to confirm that it covers the address where you are living or staying temporarily. You can register with any GP in your local area as long as they have space for new patients. You can also get help by:

- Asking friends
- Asking at the library
- Asking local organisations such as schools, mosques, temples and churches
- Asking a support worker
- Asking your housing case worker
- Looking on the NHS Choices website – www.nhs.uk

What does it cost?

There is no charge to register with a GP in England. Once you are registered, there is also no charge to see your GP. If your GP decides to give you medicine, you will receive a prescription.



Health Access for Refugees and Asylum Seekers

HARP working in partnership with Barnsley Asylum Seeker & Refugee Council

Conversation for Health

Every Wednesday
12.30pm - 2.30pm

2a Western Street, Barnsley S70 2BP

HARP ESOL Classes

Every Monday
12.30pm - 2.30pm

2a Western Street, Barnsley S70 2BP





Idas is the largest specialist charity in Yorkshire supporting anyone experiencing or affected by domestic abuse or sexual violence.

Our services include refuge accommodation, community based support, peer mentoring, group work and access to free, confidential out of hours helpline.

Contact Lauren Hirst on
03000 110 110
or email: info@idas.org.uk

Sexual violence or abuse can affect any of us.

IDAS is the largest specialist charity in Yorkshire supporting people who have been sexually assaulted or abused. If you have been assaulted or are concerned about someone else, please check out the information on this website for help and guidance.

[Find out more](#)

www.idas.org.uk



Migrant Help

Are the primary contractors delivering the AIRE contracts (Advice, Issues, Reporting & Eligibility)

All asylum support issues, accommodation, maintenance problems, relocation requests, ASPEN card issues & maternity payments need to be reported to Migrant Help 0808 8010503.

The Migrant information Hub is managed by Migration Yorkshire. 0113 378 8188

The Hub aims to offer useful information and resources to help migrants and those supporting them to stay safe, connected and informed and to reduce the harmful impacts of coronavirus on peoples lives.

The Hub is organised into 3 main sections

1. Multilingual Resources: -Resources on various topics in community languages
2. How to help and support migrants through the disruption, impact and challenges of the Coronavirus.
3. Migrant Sector Support to help professionals and organisation to understand and respond to emerging needs.

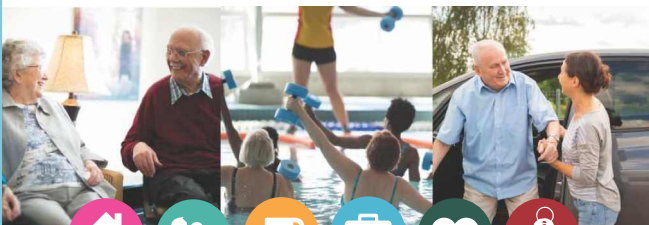


Stay Safe,
Stay Alert
Wear Your Facemask

Barnsley
LiveWell

The quickest and easiest place to find information about health, wellbeing, care and support related services.

www.livewellbarnsley.co.uk



Educating Learning Support Hub



Offering Lesson in English as a Second Language

Tel: 01226 643249

www.elshub.org.uk

South West Yorkshire Partnership
NHS Foundation Trust



Are you new to Barnsley?

Do you have health problems?
Do you have problems registering with a GP?
Do you want advice about health?

Contact the Health Integration Team

01226 731686

Launch of new courses and transport service for anyone aged 19 and over wanting to return to education.



Are you aged 19 or over and looking to start a new chapter in your life? Do you want to learn a new skill, access university, get a new job or even change careers? Northern College in South Yorkshire has launched a new range of courses designed especially for you and is taking applications throughout January 2022. The college has also launched a discounted bus service taking you to its front door from Barnsley Interchange for £1 (cash or contactless). This, alongside free parking, gives even more individuals the opportunity to study with like-minded adults and progress their goals. So, if you are aged 19 or over and want to change your life, apply for a course at Northern College today and study with like-minded adults in the beautiful and tranquil settings of Northern College. You could even start your studies this month. You can apply to join its many students who choose to study residentially on campus, surrounded by over 500 acres of National Trust gardens and parkland, to focus on their studies. This means you will also benefit from enhanced wrap-around support and enhanced learning opportunities with like-minded peers and specialist tutors to progress your goals.

Courses published at www.northern.ac.uk can help you into a range of careers with introductory courses up to level 3 and beyond, including:

[Health Care](#) | [Counselling](#) | [Education](#) | [Business and Leadership](#) | [Social Sciences](#) | [Community Development](#)

You can apply for introductory courses with no formal qualifications, or even choose to develop your English, Maths and Digital skills.

The college is also taking applications throughout January for its level 2 and 3 qualifications, including its [access to university programme](#) to fast track you to university. Most of their courses are [fully funded](#) for eligible adults aged 19 and over up to studying at level 2, and financial support is available for courses from level 3 upwards. So, you may be able to [study for free](#). Many students describe their experience of studying at Northern College for adults as life changing, the college has excellent achievement rates and is rated outstanding by Ofsted.

Yultan Mellor, Principal and Chief Executive, explains: "We are delighted to announce this new partnership with South Pennine Community Transport to launch our new bus service. "This discounted bus service will bring students right into our campus for the first time. The timetable is designed with students in mind, to sit alongside our course timetable, and will bring you directly to our front door. "This will benefit many of our students who use public transport to come to college, making travel much easier for them at times to suit. It will support students applying for our new courses from January 2022." South Yorkshire Combined Authority provides funding to Northern College to support its residents to achieve and progress. Mayor of South Yorkshire, Dan Jarvis, said: "I greatly admire the work that Northern College do to upskill adults in our region, helping them to achieve their goals – whether that is to study at university or have a career change. Supporting people to improve their skills and secure good jobs is absolutely critical to the success of our people and places across South Yorkshire.

"It is great to see the launch of a new bus service to the campus, giving thousands of prospective learners across South Yorkshire better access to high quality education opportunities and giving drivers a green alternative to their journey."

[Book your course today](#) and start a new chapter in your life with Northern College.

- Telephone [01226 776000](tel:01226776000) to speak with their friendly team
- Email advice@northern.ac.uk
- View our courses at: www.northern.ac.uk



Calling all voluntary and community organisations

Did you know that we help people aged 19 and over back into education to change their lives?

To support this, we are currently offering voluntary and community organisations:

- Free group taster sessions to help adults back into education
- Fully funded residential courses for eligible students
- Transport into college
- No entry requirements for many courses

Our residential courses are two full days and one night at our stunning campus in South Yorkshire, surrounded by over 500 acres of National Trust gardens and parkland. This offers the ideal spot for students to focus on their studies with like-minded peers and receive exceptional support throughout.

Residential courses are fully funded for many students up to level 2. This is usually if they are unemployed, on certain benefits, or earn £17,374.50 a year or less. We also offer some digital courses free to all adults, regardless of income, alongside English and Maths. A residential stay for these courses includes bed, breakfast and evening meal.

There are many courses and subjects available, and we are open to conversations to meet the needs of groups and organisations. Subjects include but are not limited to outdoor courses in Forest Skills, English, Digital, Maths, Team Leadership, Volunteering, Peer Mentoring, Substance Misuse, First Aid, Enterprise Skills and Counselling.

We are also able to offer three-hour taster courses on your own premises should this be more appropriate. These courses can be negotiated on a bespoke level ensuring that the needs of your group are met. See our website for ideas and examples of delivery: www.northern.ac.uk

Many of our students describe their period of short intensive study at Northern College as life changing, as our students progress onto higher level courses and work.

If you require any further information and to book your residential learning opportunity email awright@northern.ac.uk or telephone: 0778 7504841.

Photo: adult students using the Northern College discounted bus service, travelling from Barnsley Interchange to the college's front-door for just £1 each way.



SPSAS[®]

SINGLE PARENTS SUPPORT AND ADVICE SERVICES

SPSAS is a charitable company for single parents all over the UK. They aim to combat isolation and loneliness through uniting as a community. Their first charity shop has opened in Barnsley town centre.

If you would like more information please visit:

www.singleparentssupportandadVICEServices.co.uk

Why study at



**NORTHERN
COLLEGE**

You can benefit from a unique adult learning environment which includes:

STUDYING ALONGSIDE LIKE-MINDED ADULTS

RESIDENTIAL ACCOMMODATION SO YOU CAN FOCUS ON YOUR STUDIES AND RECEIVE WRAP-AROUND SUPPORT

ACRES OF NATIONAL TRUST GARDENS AND PARKLAND FREE FOR YOU TO EXPLORE

STAFF SPECIALISING IN ADULT EDUCATION TO SUPPORT YOU EVERY STEP OF THE WAY

EXCELLENT STUDENT ACHIEVEMENT RATES, REGARDLESS OF ENTRY LEVEL

A WELCOMING AND INCLUSIVE LEARNING ENVIRONMENT

STUDYING AT A COLLEGE GRADED AS OUTSTANDING BY OFSTED

HOW DO I BOOK?

Find a course to suit you and book your place at

www.northern.ac.uk

or telephone 01226 776000 for a chat with our friendly team

COVID-SECURE BY COMPLYING WITH ALL GOVERNMENT GUIDANCE ON MANAGING THE RISK OF COVID-19



Refugee Integration Barnsley

The Barnsley Refugee Integration Service (BRIS)

Receiving refugee status can provide certainty and safety, but the period of change between being an asylum seeker and a refugee brings its own challenges.

When a person's claim for asylum in the UK has been determined and they are granted leave to remain their Home Office provided accommodation and their weekly allowance will cease 28 days after the date of the decision.

During this period, there is an urgent need to source alternative accommodation and an alternative income.

Who we are

BRIS is a programme of individual support offered to new refugees age 16+, in Barnsley. The support helps individuals to access services such as housing and benefits. The service is run by Barnsley Metropolitan Borough Council in partnership with Migration Yorkshire

Who can access this service?

People receiving a positive asylum decision within the past two years through: refugee status; humanitarian protection; family reunion; discretionary leave of over 30 months or unaccompanied asylum-seeking children with leave to remain.

What kind of support is on offer?

We work with each individual to devise a six-month plan that's right for them. Individuals will have access to:

A named support worker

Housing advice

Benefits advice

Applying for a bank account

Support with job-seeking

Opportunities to engage with the local community

Access to health, training, education, ESOL

A range of other tailored support

How to refer someone

Contact us to discuss a potential referral.

Phone: 01226 787602

Mobile: 07775033443, 07795389596

Email: adviceservices@barnsley.gov.uk



JOIN OUR FEELS LIKE HOME FAMILY!

*A group made by
and for YOU*

Practice English with friends
Discover Barnsley and the UK
Explore Barnsley's museums
and galleries
Go to interesting places
Connect with local people
and share your lives
Find out about opportunities

**Every Wednesday
4:30 - 6:30**

Barnsley Museum
Learning Lab
Town Hall
Church Street, Barnsley
S70 2TA

Facebook:

<https://www.facebook.com/Feels-Like-Home-100877908934396>

Email:

feelslikehome@barnsley.gov.uk

Join us!

Call / text Joanna on
07873 655035



BARNSELY
Metropolitan Borough Council



Supported using public funding by
**ARTS COUNCIL
ENGLAND**



Storytelling sessions for families

STORIES AROUND THE WORLD

Lightbox Library

Every Monday from Monday 14th February

To join, call / text Joanna on 07873 655 035

Come and share stories, learn new skills and develop your English Language!

- Access books from Barnsley Libraries
- Learn new English for telling stories
- Learn new storytelling techniques with famous storyteller Richard O'Neill
- Share stories from around the world
- Help to create an international collection of stories for Barnsley Library storytelling sessions
- Have the chance to perform your story in front of an audience (if you want to!)



BARNSELY MUSEUMS

FEELS LIKE HOME

IMPROVE ENGLISH
SHARE CULTURE

MAKE FRIENDS
BROADEN HORIZONS

**WEEKLY SESSIONS FOR ALL SPEAKERS OF
OTHER LANGUAGES.**

CHILDREN VERY WELCOME.

Wednesday 4:30pm - 6:30pm
Barnsley Museums Learning Lab

The Penistone Refugee & Asylum Seekers Support Group

together with **Penistone Churches Together** invites you to

ANOTHER BIG CONVERSATION

about
Welcoming Refugees & Asylum Seekers into our Communities

It is five years since our first conversation and there is still much to discuss and learn

Save the NEW Date!

on Saturday 7th May 2022, from 9.30am - 12.30pm
in St. John's Church, Penistone

Speakers will include...

Sarah Sonne, National Development Manager, Refugee Council

Rachel Payling, Head of Stronger Communities, BMBC

Asylum Seekers and Refugees living in Barnsley

Members of the Barnsley Feels Like Home Group and the Barnsley Refugee Council

Members of the Penistone Refugee and Asylum Seekers Support Group

"Everyone comes from somewhere

Everyone has a past

Everyone is somewhere first

Everyone is somewhere last"

Michael Rosen

An asylum seeker is a person who has left their country of origin and formally applied for asylum in another country but whose application has not yet been concluded.

In the UK, a person is officially recognised as a refugee when they have their claim for asylum accepted by the Government.



FOODBANK

Unit 14 Aldham Industrial Estate
Wombwell
Barnsley, South Yorkshire S73 8HA

Barnsley Foodbank has 13 active pick up points around Barnsley,
If you need help from the foodbank there are a few simple steps to follow.
The most important step is to get a foodbank voucher from an approved local agency
EVERYONE WHO GOES TO TA FOODBANK FOR EMERGENCY FOOD NEEDS A VOUCHER

The agencies the foodbank works with include:

Citizens Advice
Barnsley Family Service
Local Schools
Credit Union
Housing Association
Children's Centres

Health Visitors
GP Surgeries
Housing Support Officers
Family Services
Local Charities
Barnsley Social Services

Take the foodbank vouchers to the nearest Foodbank Centre
Detailed information about Foodbanks can be found on the Foodbank Website.

Barnsley Foodbank Telephone: 01226 235280



Race Against Hunger

Saturday 2nd April 2022

Supporters all around the UK
will come together to
Race Against Hunger
to raise money to help end
the need for foodbanks

Barnsley Refugee Council



The Barnsley Refugee Advice Project

23 Queens Road

01226 320111

07917 135843

Email: Christina.Grant@RefugeeCouncil.org.uk



for more information contact
secretary.bbcos@gmail.com